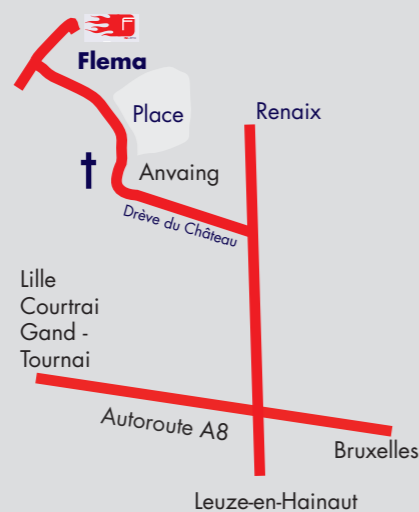


Buy our door kits or even become a FLEMA installer by buying our components in bulk.

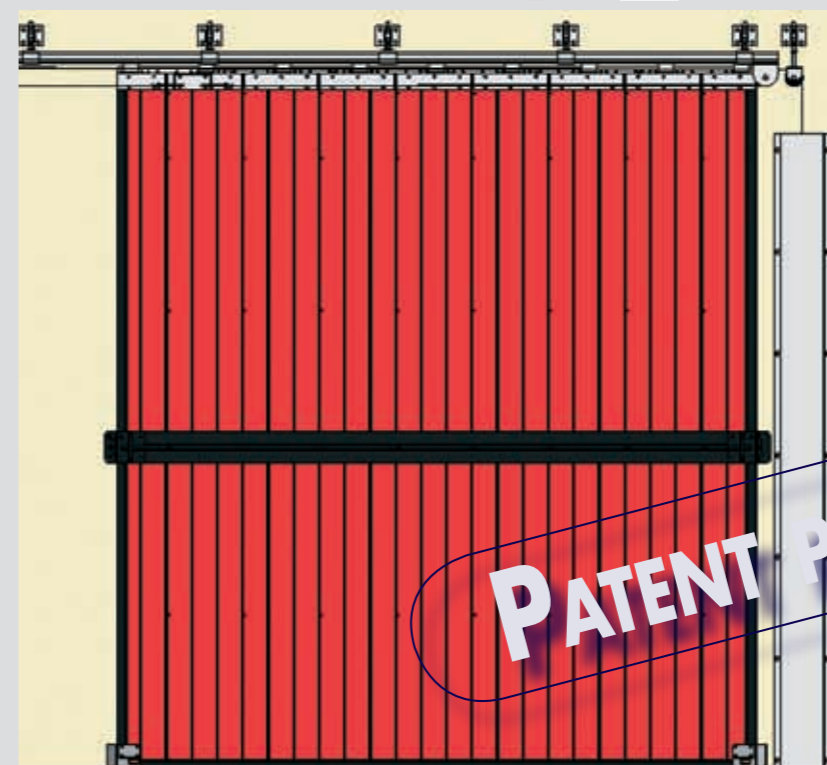
In both cases, take advantage of our CEN1363-1 and CEN1634-1 certification.

To obtain our catalogue, do not hesitate to contact our Customer Service : e-mail : info@flema.be



FLEMA sprl
rue Outre 46
7910 Anvaing
Belgium
T : +32(0)69/67.27.87
F : +32(0)69/67.27.80
www.flema.be

www.flema.be



PATENT PENDING

Sliding door **PL60**
Fire resistance: 60'
Inside installatie



Today thanks to a high level of technicality of our products, the fire-proof doors are lighter and close to traditional doors.

Flema was established in 2004 with the purpose of developing fire-proof products (roller shutters, sectional and sliding doors) of a design very close to traditional closing elements in order to achieve light, modern and easy to produce, assemble and install doors at very competitive prices.

To achieve this challenge, we have filed a patent. The concept is quite simple: synthetic profiles with an intumescent core.


Mission accomplished!

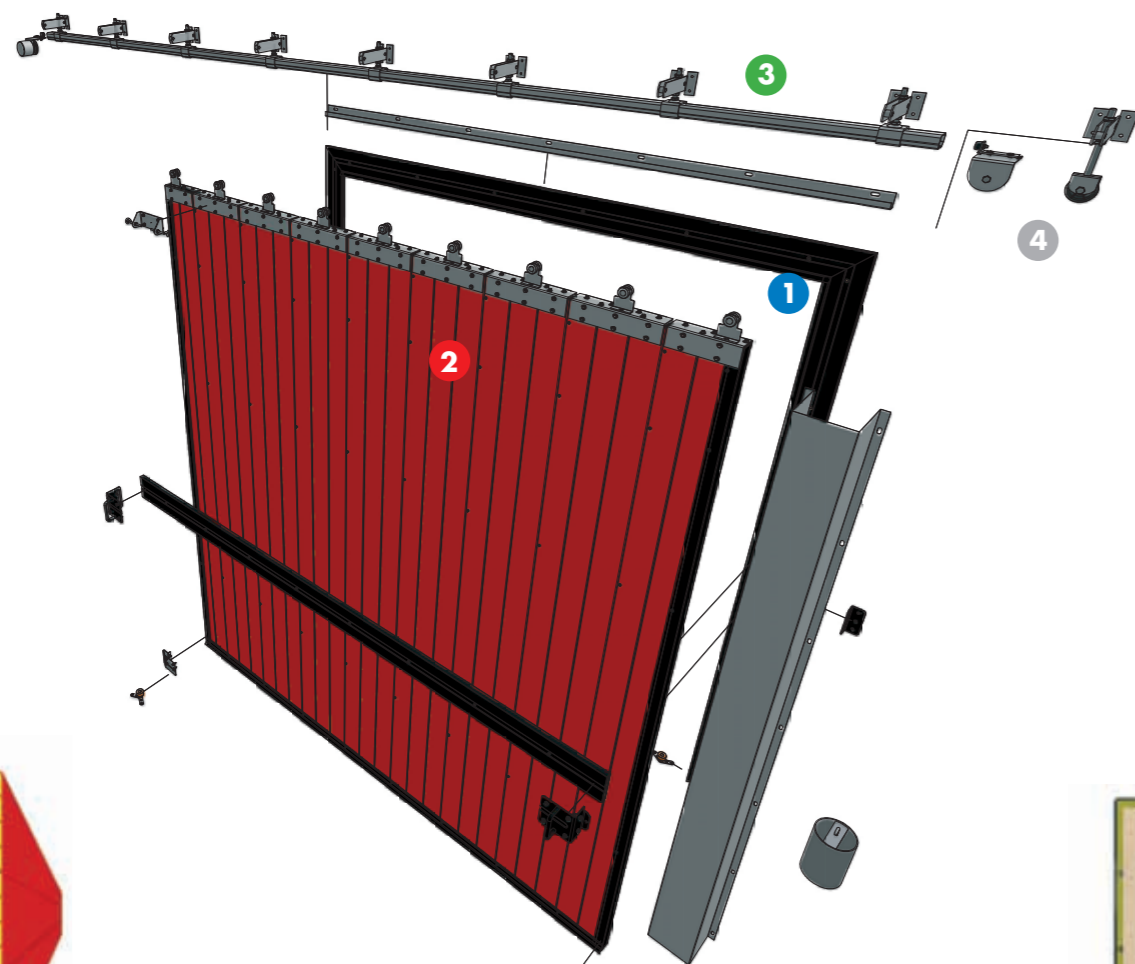
Sliding door PL60

The sliding door PL60 Flema is fire-proof door that is characterized by its patented RF60 plate and frame.


The mechanical system is very simple.

The Flema sliding door PL60 is made up of :

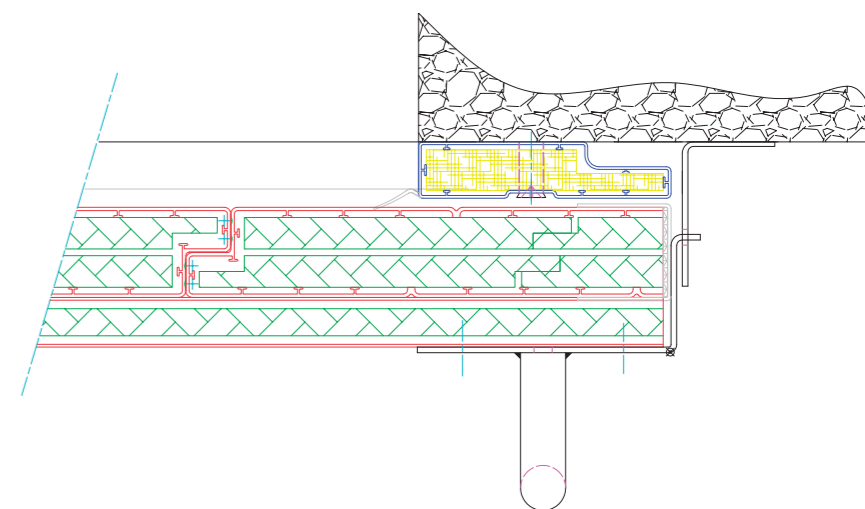
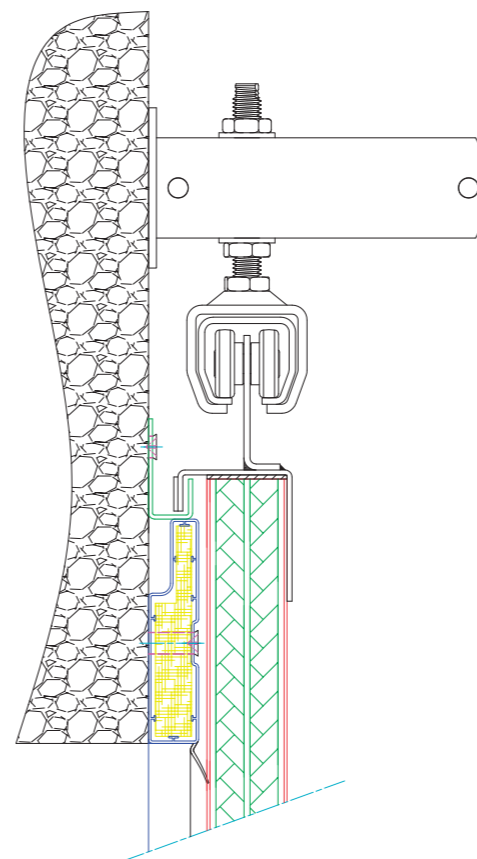
- 1 - a RF60 frame 
- 2 - a RF60 plate 
- 3 - guides
- 4 - system of closing



Panel
thickness : 40mm
weight : 38kg/m²

 Patent pending
Flema

Frame
18x120mm



The principle is very simple: panels with a thickness of 40mm en 300mm width are placed vertically and suspended via rollers to a rail.

The panels are attached between them with a fire-proof reinforcement profile so that it rigidify the door.

The mechanism works thanks to a pulley and an electro-magnet brake placed on the rail side what makes it possible to control the closing speed of the door.

This door carries many advantages :

- Patent pending 
- Thickness of panel: 40mm
- Synthetic matter: rustproof
- Mass tinted
- Easy to install
- Conventional mechanism
- Air and water tightness
- Reduced obstruction
- Approved by the food processing and medical industries
- RF60, EI60, EW60
- Simple to transport

Certified products

This sliding door has already been tested and approved as per the CEN1363-1 and the CEN 1634-1 European standards soon in application.

